



To succeed in business it is necessary to make others see things as you see them.

Case Study

IPTV Games

Abstract

Online games are the future of the interactive entertainment industry, seeing the convergence between the traditional media, entertainment industry, and the gaming industry in an effort to develop new and sustainable business models and revenue streams in an increasingly online world. Our specialized game service focuses on the development of customized mobile game, porting and game testing across various platforms including some of the leading mobile handsets, handheld devices/ PDA and iPhone.

Case Study

Client Profile

A leading Gaming House approached with an idea to develop IPTV games to suit the television quality and graphics that are bandwidth efficient.

Business Need

The client wanted us to develop the IPTV games where online subscribers can receive TV/Video signals and other multimedia services via broadband Internet connection.

The main objective behind the development of IPTV games was to extend a unique user experience enabling them to have dynamic content updates for interactive games and e-learning applications.

Gateway's Solution

Gateway developed interactive games for digital television platforms like IPTV and OpenTV. We specialize in the development of single and multiplayer interactive TV games, brainteasers and puzzles that are fun filled, challenging and inspirational.

We have developed over 50 games on IPTV platform, which includes simple trivia games, word games, puzzles, and complex games like poker and backgammon. The brief about few of the Games developed for the client are given below:

A] Tetris - The objective is to manipulate Tetris Objects, by moving each one sideways and rotating it by 90-degree units, with the aim of creating a horizontal line of blocks without gaps.

B] Bejewelled - Bejewelled is one of the most popular puzzle games. The objective of the game is to clear the gems in the game board by swapping adjacent gems to make three or more gems of same color line up horizontally or vertically. When the lined up gems disappear, the gems above them fall and extra space is filled with random gems.

C] Chess - Chess is one of the world's most popular board games. The game is played on a square chequered chessboard. The objective of the game is to checkmate the opponent's king, whereby the king is under immediate attack (in "check") and there is no way to remove it from attack on the next move (in "checkmate").

D] Bubble Words - The objective of the game is to bubble up the randomly issued letters to make as many words as possible in order to reach a points target and successfully complete a level before the grid is filled up.

E] Word Heist - Player can select only the letters that is adjacent to the previous selected letter while forming a word. Players can shuffle letter only 5 times. Players will be assigned values based on letters they use to make words. Forming a particular length of words unveils a secret letter. Upon using the secret letter, the users can score more than normal points.

H] Deal With It - The objective of the game is to produce the best score you can from 12 poker hands by using only 25 cards in a 5 x 5 card grid. When the game starts you will be dealt cards. User will only have 15 seconds to place this card wherever he wants on the grid by using the arrow buttons. He can place the card before time runs out by pressing ENTER.

Case Study

Once ENTER is pressed or the timer runs out, the card in play cannot be moved for the rest of the round. When the grid is completed, each hand is again scored individually, with the total score updated each time until the final score is given and the game is completed.

F] Push N Shove - In this classic game of strategy, user has to move the turtle around the beach and push the eggs into holes. User can use the arrow buttons on the remote to move the cursor around the grid and to move the turtle against the egg. The egg will be pushed in the same direction. The scoreboard will indicate the number of MOVES and PUSHES made. The aim is to push all eggs into the holes within the shortest time. If user wants to reset the level to its original layout, he can press the YELLOW button. If user gets stuck, he can press the BLUE button to undo previous moves and pushes.



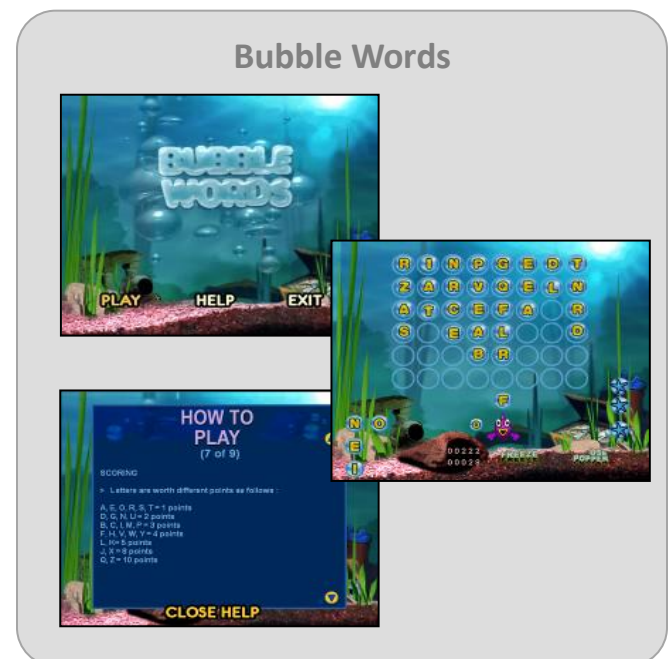
Technology

- Java 2 Platform, Micro Edition (J2ME)
- Eclipse IDE, Flash,
- Phoenix Game Engine
- Auran Game Engine
- Nimitz Game Engine
- Flex

Industry

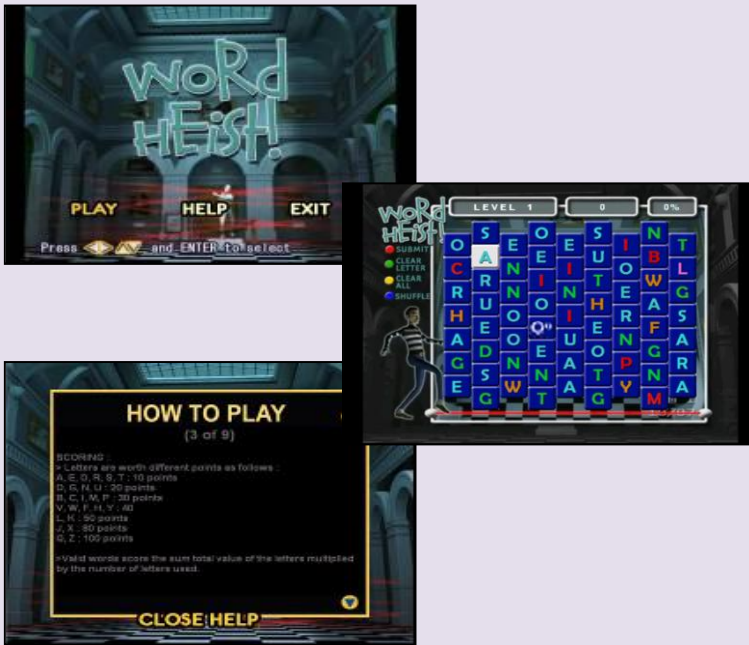
Gaming

Screen Shots



Case Study

Word Heish



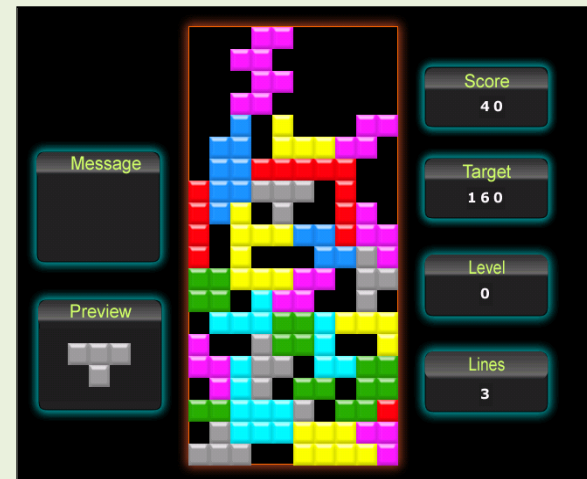
Bejeweled



Deal-With-It



Tetris



Case Study

Push N Shove



Gateway TechnoLabs defines designs and delivers IT-enabled business solutions that help Global 2000 companies win in a flat world. These solutions focus on providing strategic differentiation and operational superiority to clients. Gateway creates these solutions for its clients by leveraging its domain and business expertise along with a complete range of services

With Gateway, clients are assured of a transparent business partner, world-class processes, speed of execution and the power to stretch their IT budget by leveraging the Global Delivery Model.

Gateway TechnoLabs Pvt. Ltd.

Head Office: B/81, Corporate House, Judges Bungalow Road, Bodakdev, Ahmedabad - 380 054 INDIA.
Tel: +91 (79) 2685 2554 / 55 / 56 Fax: +91 (79) 2685 8591 E-mail: gateway@gatewaytechnolabs.com
Web: www.gatewaytechnolabs.com